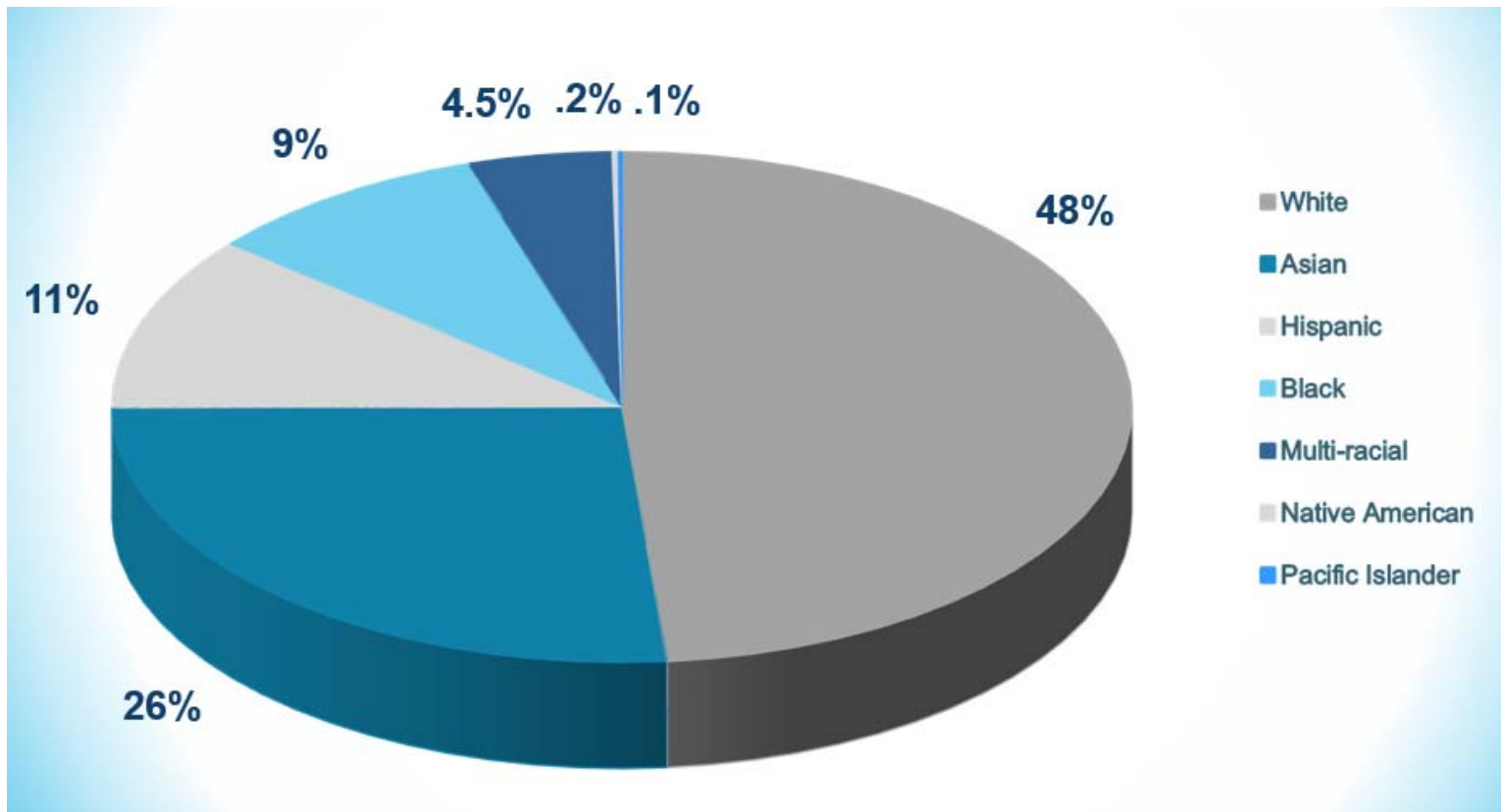




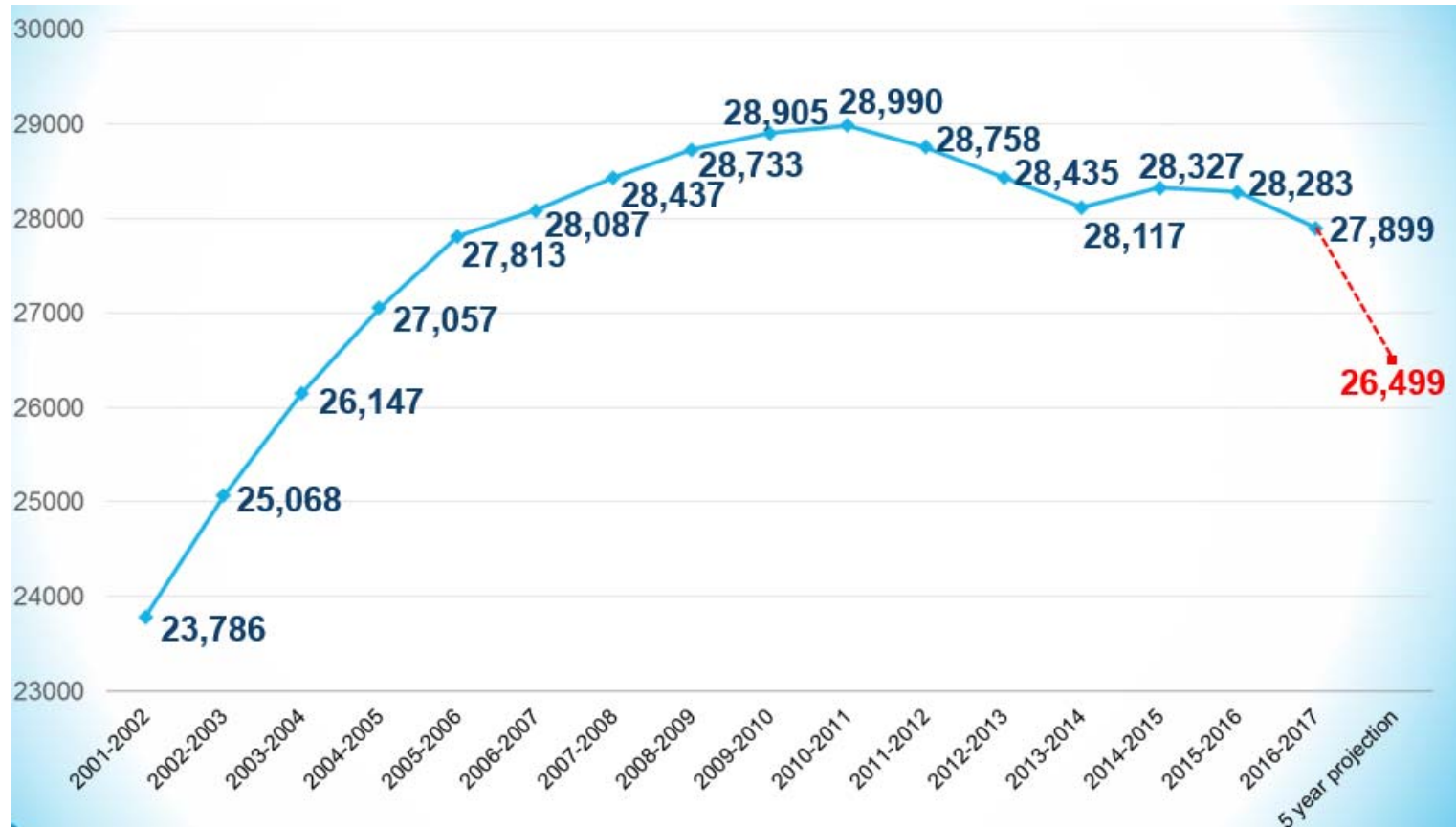
NAHC PRESENTATION

Saturday, December 16, 2017

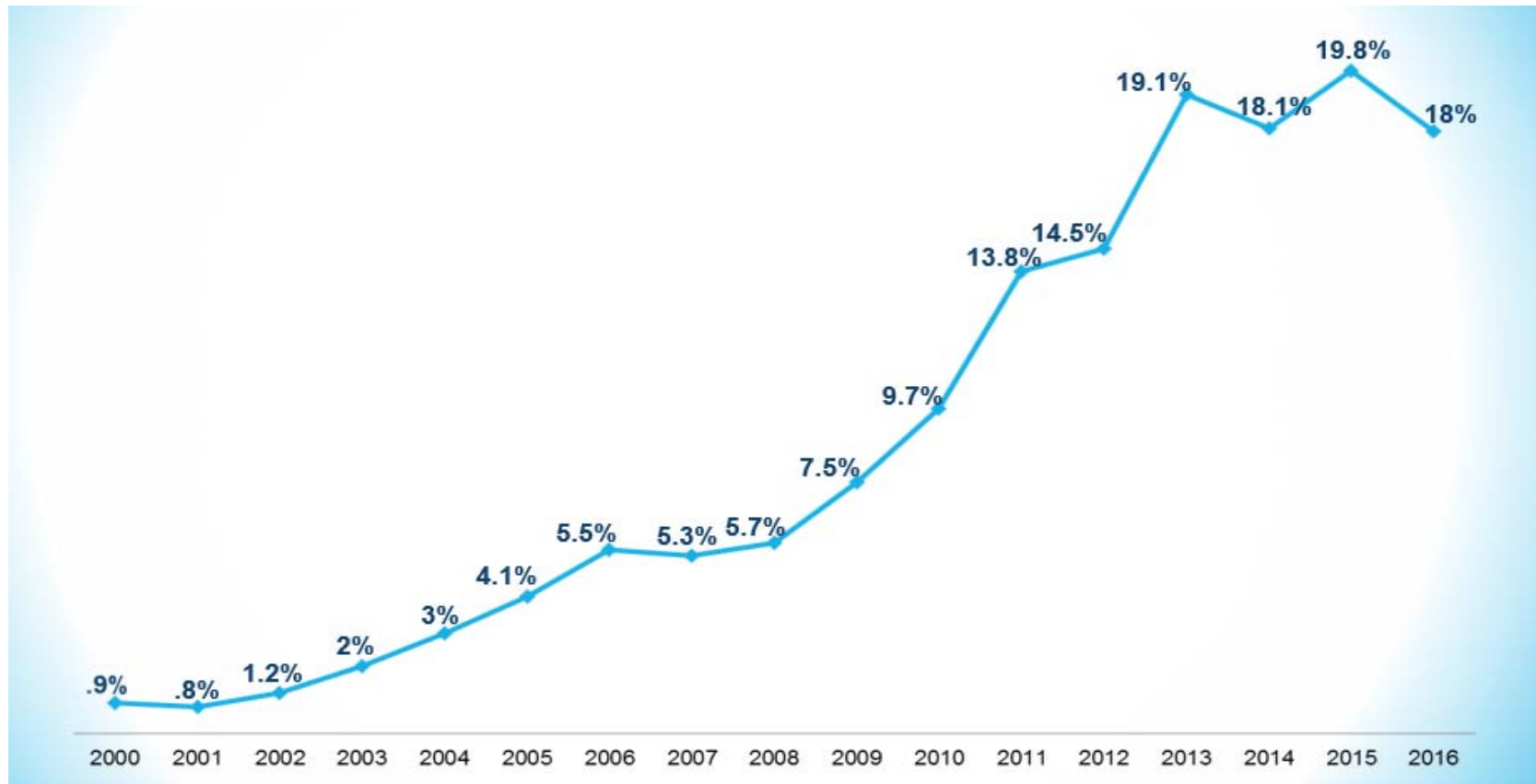
Student Demographics



Enrollment



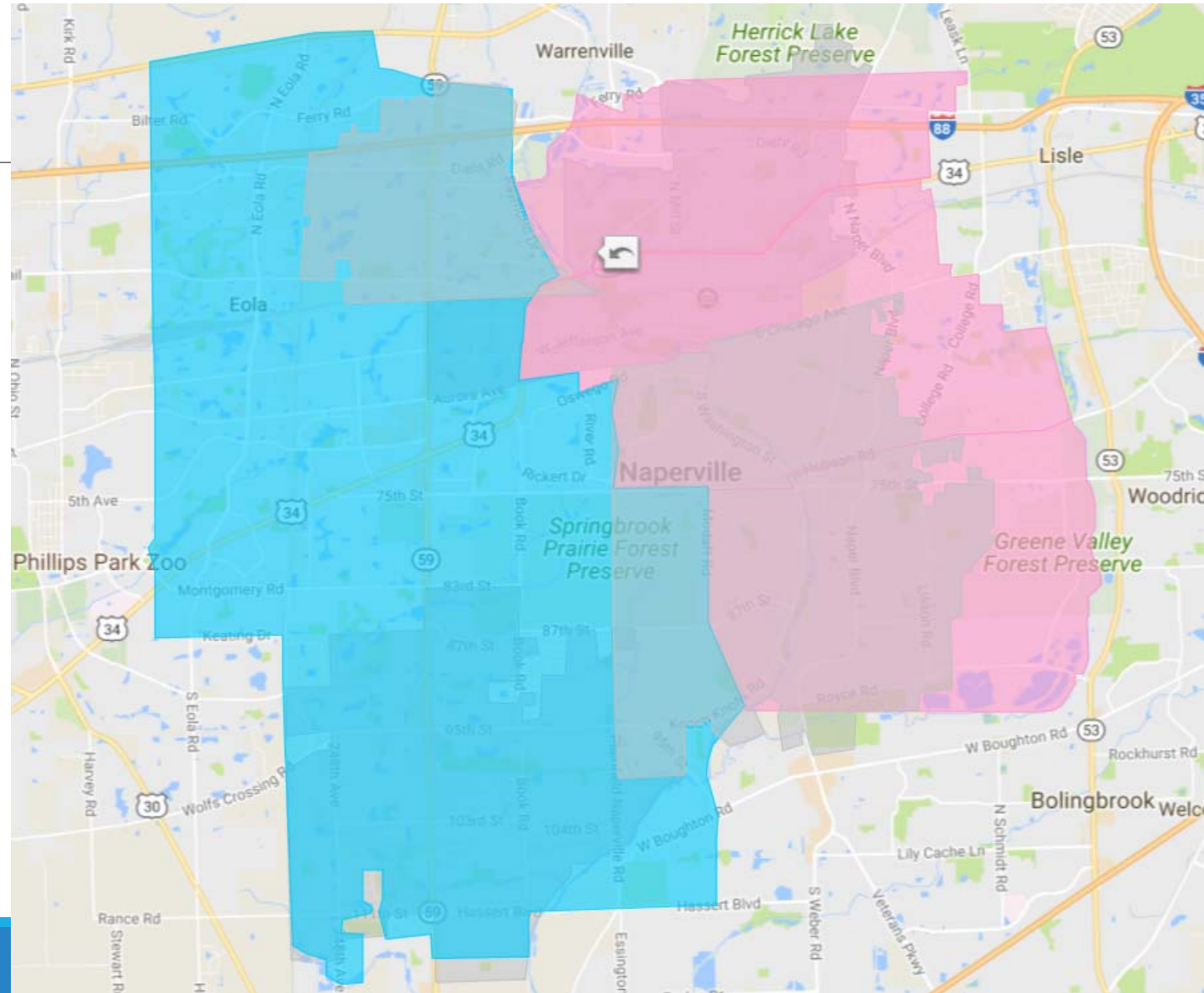
Low Income Percentage by School Year



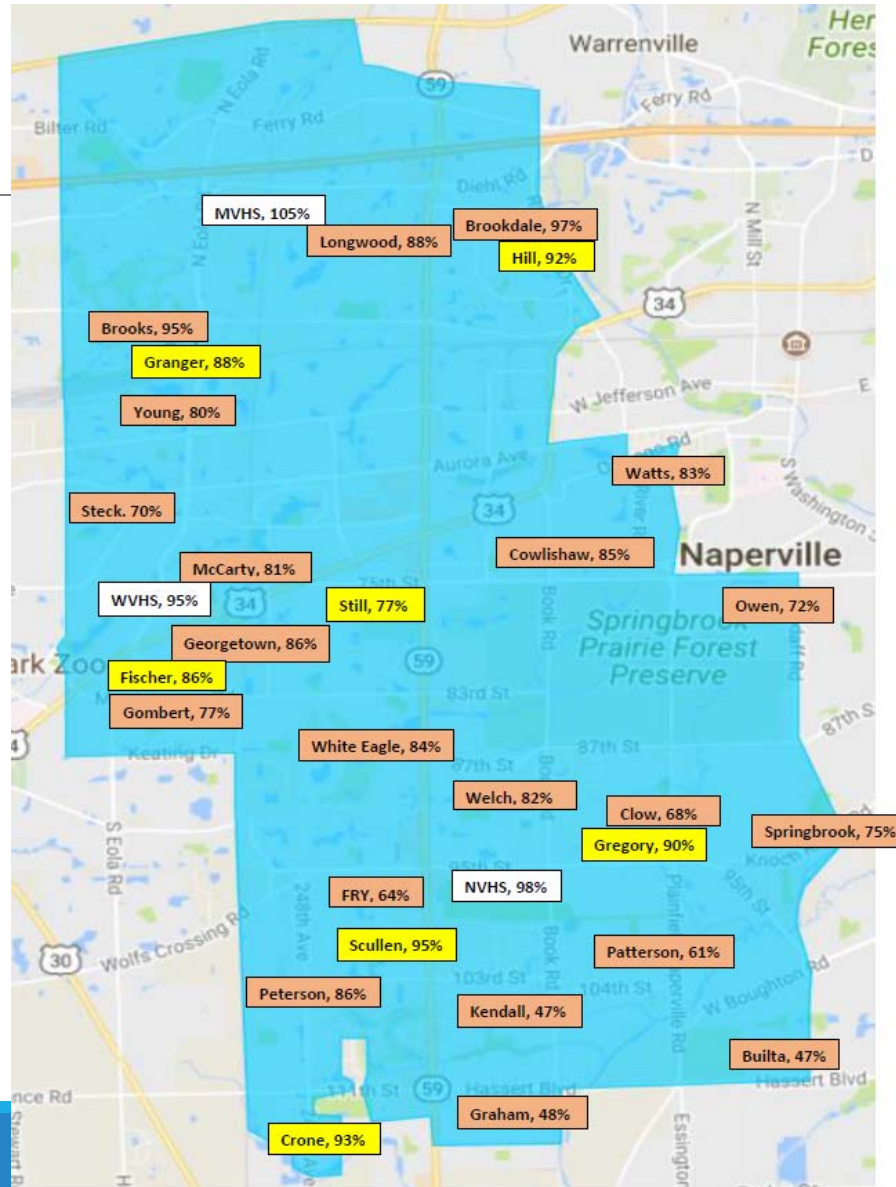
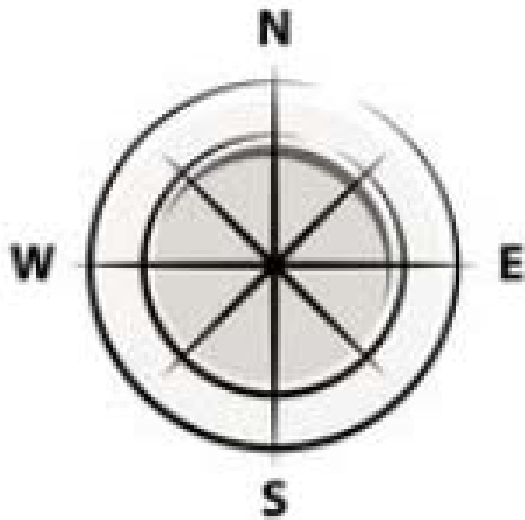
City of Naperville

District 204

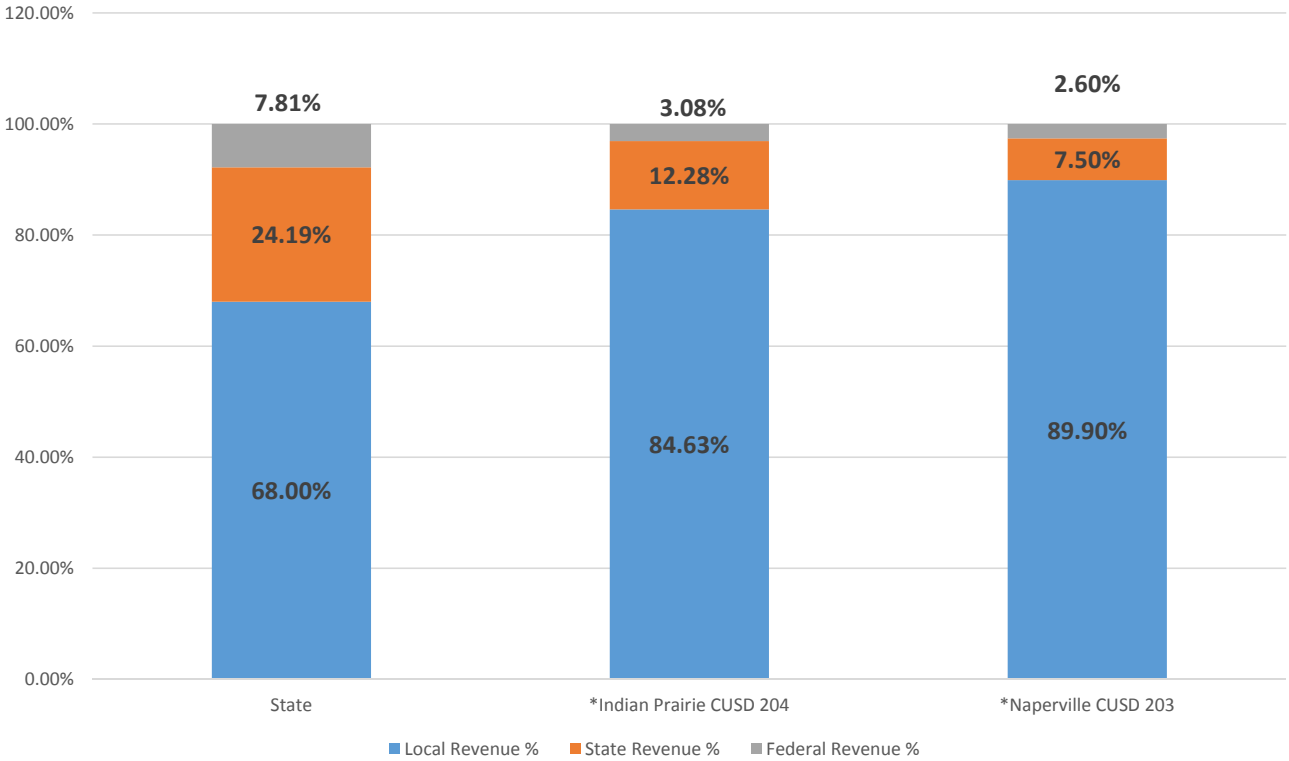
District 203



Percent of Capacity Used



Revenue Sources

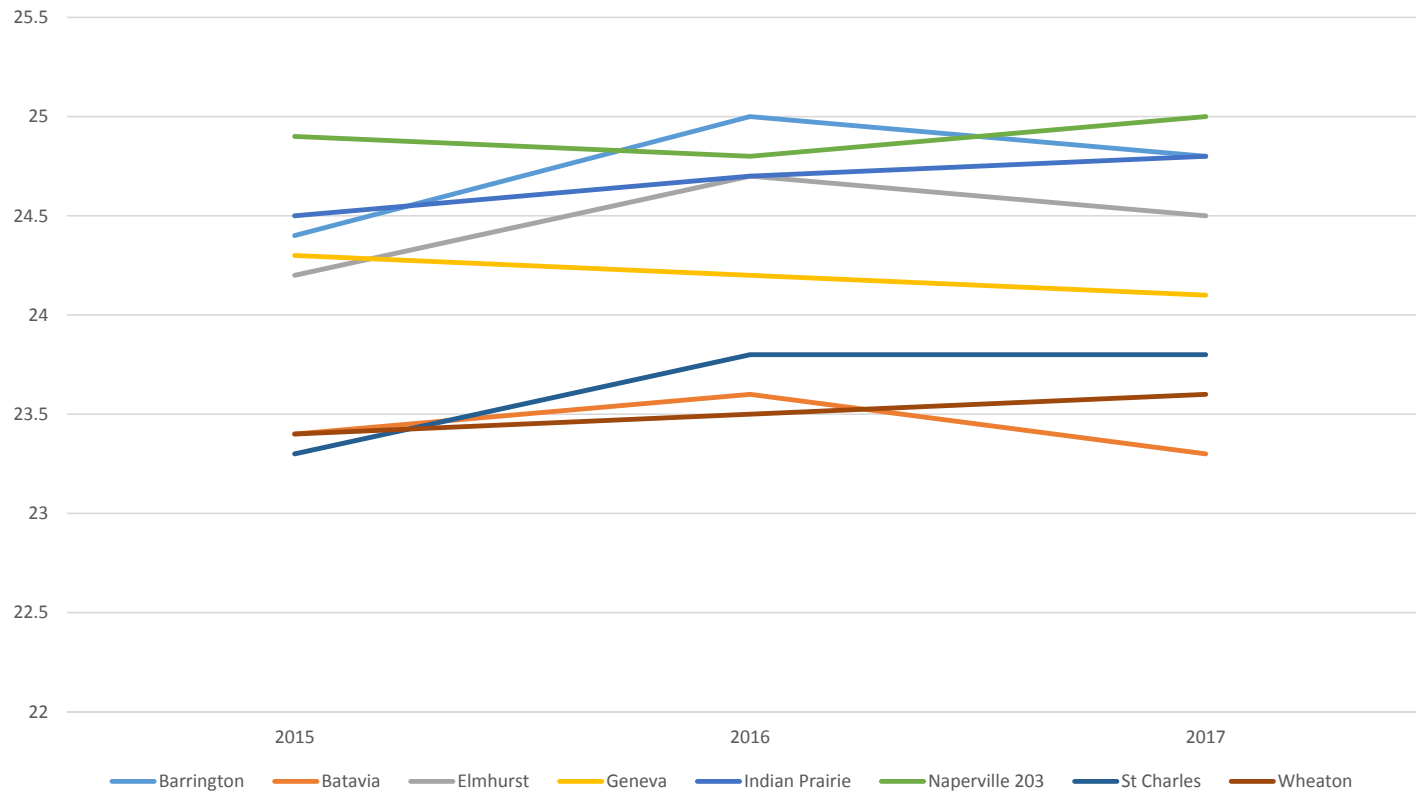


Achievement & Operating Expense



ACT

Composite ACT Score



How do we position ourselves to meet the needs of all students?



- We provide a wide variety of programs/opportunities to meet the needs of our students
- The range is from AP/Dual Credit Coursework to Individualized Education Programs for students with identified disabilities
- We also provide opportunities for students to explore interests—clubs, extra-curricular activities, competitions in a wide range of topics
- Teachers and administrators work with students and families to explore student needs and support them
- Personalized learning instructional practices support students by engaging them in interest based learning and/or using digital resources to scaffold instruction based on student need

What are the initiatives we use to identify and mitigate the social and academic pressures on students?



-The Illinois Social Emotional Standards are embedded into the English Language Arts curriculum (K-12)

-In addition, key topics regarding stress management, coping, bullying, making healthy choices, mental health awareness etc. are part of the health curriculum

-Students have access to mental health professionals (e.g., Social Workers, Psychologists, Guidance Counselors, 360 Youth Services) at every level to assist with low, medium, and/or high risk situations

-Referrals to support a student within the school environment may be generated by the family/student, school staff, or outside provider

-Students with suspected and/or identified mental health disorders may be eligible for special education services and/or 504 Plan (America's Disability Act)