

# 2013 Flood

April 18, 2013



# Quick Facts

- 6.14 inches of Rain
- 80.3 million gallons of rain in Chicagoland Area
- Phone Calls:
  - DPW Call Center – 1,300
  - City Dispatch – 4,000
  - Water - 358
- 494 Service Requests for Flood Event in 2 Days
  - Compared to 300 for the whole month of March
- Governor Quinn declared 38 counties in Illinois State Disaster Areas, including DuPage County.
- Normal River Flow is 200 Cubic Feet/Second (CFS), was 4,580 CFS at 3am on Friday
- River Flood Warning until 3:00pm Sunday



# Timeline of Events

- Wednesday, April 17
  - 6 – 8 pm Public Works employees responding to flood calls, clearing inlets & preparing for flooding
- Thursday, April 18
  - 4:30 am – Notified downtown merchants along river of rising water
  - 5 am – Naperville EOC Activated at Fire Station #7
  - 8 am – Indian Prairie School District 204 Closed
  - 9 am – Sandbags available at Riverview Ct, Centennial Beach & 95<sup>th</sup> Street Library
  - 9:11 am – Interactive Road Closure Map Available to Public
  - 10:26 am – School District 203 starts early dismissal
  - 10:38 am - DuPage County opens shelter at Benedictine's Krasa Center
  - 3:08 pm – Fire Department rescues canoers
  - 4 pm – Naperville EOC Deactivated, Ops Center moves to Public Works
  - 4 pm – Downtown Bridge & Street Closures Begin
  - 6 pm – Fawell Dam opened to full capacity – (10 Ft.)

# Timeline of Events - continued

- Friday, April 19
  - 5 am – Closed Washington St. & Downtown areas
  - 8:58am – DuPage County lowered Fawell Dam to 7.5 Ft. (75%)
  - 11 am – River dropped 8 inches

# City Response

- City public works crews, accompanied by police, were circulating in various districts, looking for trouble spots.
- Crews from all departments are responding to calls for stranded motorists/vehicles, flooded basements, electrical power problems.
- Crews set-up road closures, detour routes, cleaned storm inlets/manholes, and cleared roadway debris
- Restoration of public storm sewers will be on-going for several days. Standing water could remain in certain areas for some time.



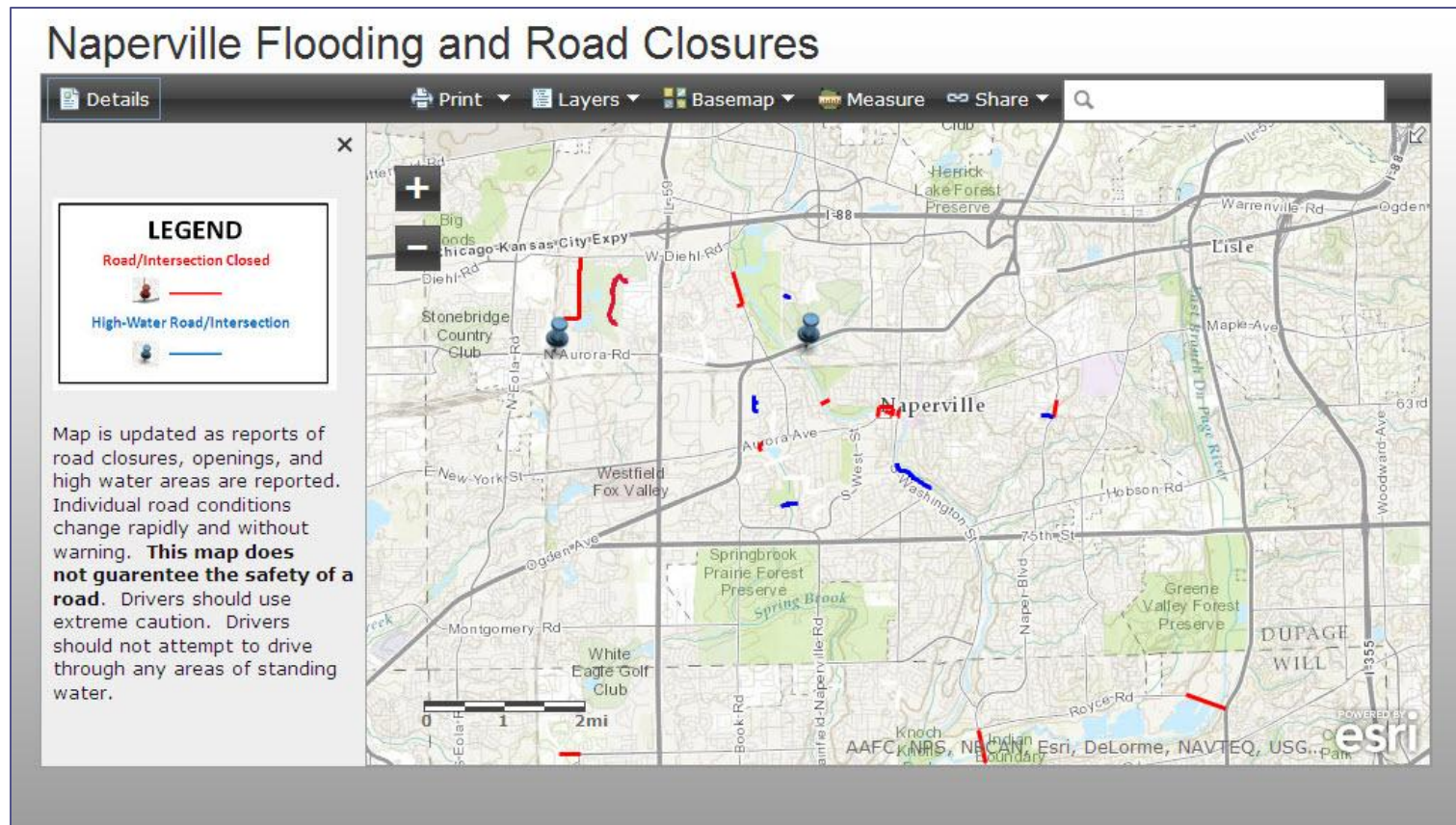
# Communication

- Resident Interaction
  - Twitter
  - Facebook
  - Email
  - Phone Calls
- Coordinated Efforts with:
  - DuPage County
  - School Districts
  - Neighboring Communities
- Continual updates to Press
- Interactive Road Closure Map



# Flood Map

- Interactive Flood Zone Map on City's Website
  - <http://gis.naperville.il.us/mashups/flood>
- Over 41,000 views of map



# Street Closures



Road	Section/Stretch	Status	Time
<b>Downtown Area</b>			
Jefferson Ave	BRIDGE	CLOSED	5:00:00 AM
Jackson Ave	Main to Eagle	CLOSED	5:00:00 AM
Aurora Ave	Main to Washington	CLOSED	5:00:00 AM
Water St	Main to Webster	CLOSED	5:00:00 AM
Eagle St	Aurora Ave to Jackson Ave (BRIDGE)	CLOSED	5:00:00 AM
Main St	Chicago Ave to Aurora Ave (BRIDGE)	CLOSED	5:00:00 AM
Washington Ave	Chicago to Hillside Ave	CLOSED	5:00:00 AM
<b>Major Arterials</b>			
Naper	Abbeywood to Dunrobin	CLOSED	5:00:00 AM
95th	Wolf's Crossing to 248th	CLOSED	3:15:00 AM
Washington St	Royce to Boughton (BRIDGE)	CLOSED	4:00:00 AM
Royce Rd	Route 53 to Green Rd	CLOSED	4:00:00 AM
Raymond	South of Mcdowell	CLOSED	4:00:00 AM
<b>Other Closures</b>			
Fairway	Country Lakes to Burke	high water	4:00:00 AM
Country Lakes	Fairway to Bunker	high water	4:00:00 AM
Redfield	Mcdowell to Foxhill Rd	CLOSED	4:00:00 AM
Kings Point	(entire length)	high water	2:30:00 AM
Shore Road		high water	4:00:00 AM
Webster	11th to 10th	CLOSED	
Frances Ct	(South end)	high water	2:00:00 AM
Gowdey	Bond st to Tudor	high water	3:00:00 AM
Testa	Whispering Hills to end	high water	3:00:00 AM
Encina	Whispering Hills to Testa	high water	3:00:00 AM
Electric Serve Center (ESC)	at entrance on Aurora	high water	2:15:00 AM
Maple	Willow to end	CLOSED	
Julian @ Porter		high water	2:00:00 AM
Edgewater	Washington to Gartner	high water	
Gartner	Charles to Citation	high water	
Oakton Ln	River Rd to Ada Ln	high water	2:45:00 AM
Black Stallion	at Mistwood	high water	
Fox Trail Ct		high water	
Terrance	(n of bailey)	high water	
Bayhill	Naper to Hyde Park Lane	high water	
Hedg Ct	(n of bailey)	high water	
Millrace Lane & Harris Lane		high water	
Foxcroft	@ killerdeer	high water	
Rock Spring Rd	Boulder Ct to Nottingham Ln	high water	



# Downtown

- Businesses along river notified Thursday morning about rising levels
- Sand Delivered to Downtown businesses for bagging
- When Fawell Dam opened, saw a 4 inch rise in 20 minutes and a 1.25 foot rise in 4 hrs
- Bridges:
  - Eagle St Closed – 4 pm
  - Washington St Closed – 6 pm
  - Washington St Opened – 7 pm
  - Washington St Closed – 8:45 pm
  - Main St Closed – 11 pm
- Streets:
  - Washington, Main, Jackson, Water, Areas of Chicago, Aurora & Jefferson



# Elevations at Fawell Dam

Fawell Dam is located on the West Branch of the DuPage River in the McDowell Grove Forest Preserve upstream of the City of Naperville. Constructed in 1971, the dam stores floodwaters on the West Branch to reduce flood heights and flood damages in downtown Naperville.

- Operating Plan
  - When Dam Reaches certain elevations, the dam is opened to relieve pressure, this water flows downstream to Naperville

Elevation	Dam Opening	City Reached
690.74	100% - 10 Feet	4/18 – 6 pm
688.74	75% - 7.5 Feet	4/18 – 11 am
687.74	60% - 6 Feet	4/18 – 10 am
686.74	50% - 5 Feet	4/18 – 9 am
678.24	40% - 4 Feet	4/17; Evening



- Normal flow of River is 200 Cubic Feet/Second (CFS)
  - At its peak at 3:30 am, flow was 4,580 CFS
  - When the dam was fully opened, there was an immediate increase of 620 CFS

# Utilities

- Several electrical outages affected the City as a result of the weather-a large portion of the S/W corner of the city is affected by a substation problem.
  - **Areas Affected:**
    - Thackery south to Gromman
    - Bennett east to Naperville/Plainfield
    - 103rd south to 111th
    - Route 59 east to Book
    - West Highlands
    - Springdale Circle

# Flood Recovery - [www.naperville.il.us](http://www.naperville.il.us)

- Destroyed carpeting should be placed at the curb in front of homes
  - Collection on regular garage day through next week.
  - Needs to be bundled and no more than four feet in length, two feet wide and weighing no more than 60 pounds
  - May be a truck dedicated to carpet collection & will potentially be collected separately from normal collection.
- Residents are asked use containers up to 32 gallons in capacity & 60 pounds in weight or one of the City-issued garbage carts. Furniture & appliances can be included.
- Yard-waste may be suspended one week to focus on collection of storm damaged materials.
- Collection of drywall and lumber will continue to be limited to two 32-gallon containers.

# Flood Recovery - [www.naperville.il.us](http://www.naperville.il.us)

- Electronics can be disposed of at the City's Recycling Drop-Off Center, 180 Fort Hill Dr., from 8 a.m. to 4 p.m. on Tuesdays, Thursdays & Saturdays.
- For more flood damage and clean-up information, visit the following:
- U.S. Environmental Protection Agency:
  - [www.epa.gov/mold/](http://www.epa.gov/mold/), [www.epa.gov/iaq/flood/index.html](http://www.epa.gov/iaq/flood/index.html)
  - [www.epa.gov/naturaldisasters/flooding.html](http://www.epa.gov/naturaldisasters/flooding.html)
- Centers for Disease Control (CDC):
  - [www.bt.cdc.gov/disasters/mold/protect.asp](http://www.bt.cdc.gov/disasters/mold/protect.asp)
- DuPage County Health Department:
  - <http://www.dupagehealth.org/after-the-flood>

# Flood Recovery - [www.naperville.il.us](http://www.naperville.il.us)

- Sand & sandbags
  - City will pick-up and dispose of used sandbags
  - Residents need to call Public Works at 420-6095 to schedule a pick-up and bring sandbags to curb for disposal
- Damage Assessment
  - City will be setting up a form on GovQa for initial damage assessment to be used in submittal for state and federal assistance. This is not a claim.
    - [http://www.mygovhelp.com/NAPERVILLEIL/\\_cs/SupportHome.aspx?sSessionID=](http://www.mygovhelp.com/NAPERVILLEIL/_cs/SupportHome.aspx?sSessionID=)